

Building Blast Simulation and Progressive Collapse Analysis

T. Krauthammer, University of Florida and J. Cipolla, SIMULIA, Inc.

FEA analysis of severe blast loading supports the design of survivable structures without necessarily requiring expensive physical simulations of a specific explosive or combustion event. These analyses also show that using established structural design guidelines may not be conservative for severe blast loading on steel structural members.

This article, from T. Krauthammer of University of Florida, and J. Cipolla of Simulia, describes the FEA modeling of the progressive collapse of a steel frame structure, and the qualitative insights gained. A full-length version of this paper is available in the NAFEMS 2007 World Congress proceedings.

Analysis of steel frame connections under blast loads

Currently, U.S. design guidelines for steel connections in structures subjected to blast loads are based on recommendations in the Department of Defense Technical Manual (TM) 5-1300TM [1]. The approach idealizes real structures and structural elements as “equivalent” lumped-mass single-degree freedom systems. In addition, the guidelines are for single-storied steel frames, not subjected to any significant dead loads apart from the self weight of the structure. The actual effects of blast and dead loads on real steel connections may exceed the margins predicted by TM 5-1300.

To assess the behaviours of steel moment connections under such loads [2], finite-element simulations using ABAQUS/Explicit 6.5 [4] were employed. The maximum rotational capacities of the connections were then compared against values derived with the TM 5-1300 approach [1]. Target connections were placed between beam and column at the ground floor of a multi-story building. Lengths of the beams and columns were taken from Engelhardt’s, et al. [8], experimental studies (Figure 1). For each connection type, four different load cases were used (see Table 1).

Reference maximum blast pressures were calculated based upon the TM 5-1300 criteria [1].

For the finite-element calculations, the standalone codes SHOCK [9] and FRANG [10] were used to compute equivalent shock pressures and gas pressures (Table 1), assuming an 18.5 lb. TNT charge located at the centre of the room. We applied blast pressures as spatially uniform surface loads on the sidewalls that transferred to the beams and the column of the connection. Dead loads, applied on the top flanges of the beams and axially on the top cross section of the column, correspond to those for a 10-story office building. The numerical model was analyzed with and without these dead loads to evaluate their influence on connection response.

An isotropic elasto-plastic model was used as the material property for each connection component [2]. Yield and ultimate strengths were increased to account for strain rate effects using dynamic increase factors (DIF) as recommended in TM 5-1300 [1]. Since brittle fracture on the weld connections was anticipated under the blast loads, we adopted the shear failure model; ABAQUS removed elements from the mesh as they failed. The finite-element models (Figure 2) were created using predominantly 8-noded continuum brick elements with reduced integration.

The responses and failure criteria based on TM 5-1300 criteria are shown in Table 2, and indicate that the representative room could withstand the loads from the explosive charge.

“...the representative room could withstand the loads from the explosive charge.”

“This type of intrinsically transient nonlinear phenomenon is difficult to model, understand, or design against without finite-element analysis.”

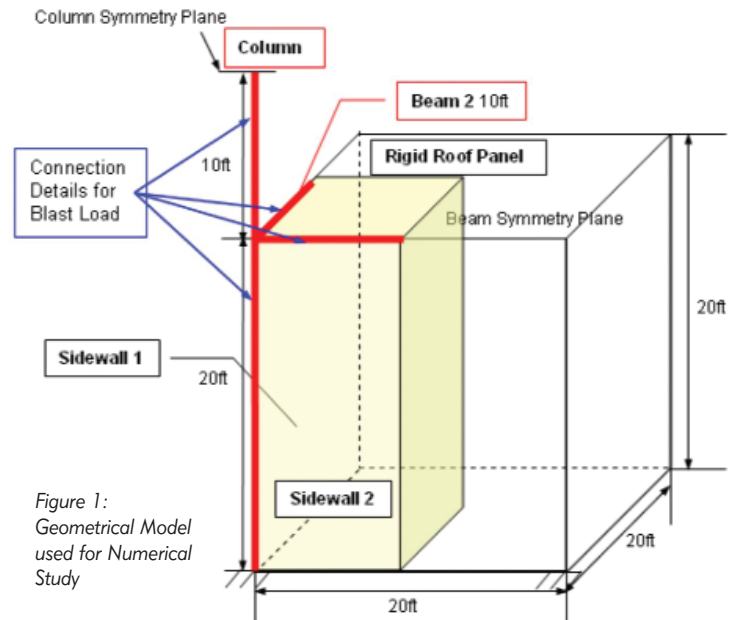


Figure 1: Geometrical Model used for Numerical Study

Table 1: Loading Data

Sidewall Case		Member	Shock Pressure		Gas Pressure	
			Peak Pressure, Psi (MPa)	Time, msec	Peak Pressure, Psi (MPa)	Time, msec
1	Two failed	Side Walls	154.7 (1.07)	1.81	28.1 (0.19)	29.95
		Floor	29.5 (0.2)	7.19	28.1 (0.19)	31.08
2-1	Sidewall 1 failed, sidewall 2 reflects	Side Walls	154.7 (1.07)	2.23	28.1 (0.19)	43.5
		Floor	29.5 (0.2)	9.06	28.1 (0.19)	44.52
3	Two sidewalls reflect	Side Walls	154.7 (1.07)	2.65	28.1 (0.19)	5864.63
		Floor	29.5 (0.2)	11.17	28.1 (0.19)	5866.79

Table 2: Theoretical Response to Blast Loads, based on TM 5 -1300.

Connection Detail	Member	Max. Deflection, X _m , (in.) (cm)	Ductility Ratio	Rotation, θ (deg.) (rad.)	Rotational Limit (deg.) (rad.)
Specimen 7	Beam	0.68 (1.73)	2.2	0.32 (0.0056)	2 (0.0349)
	Column	2.75 (6.98)	1.8	1.31 (0.0228)	

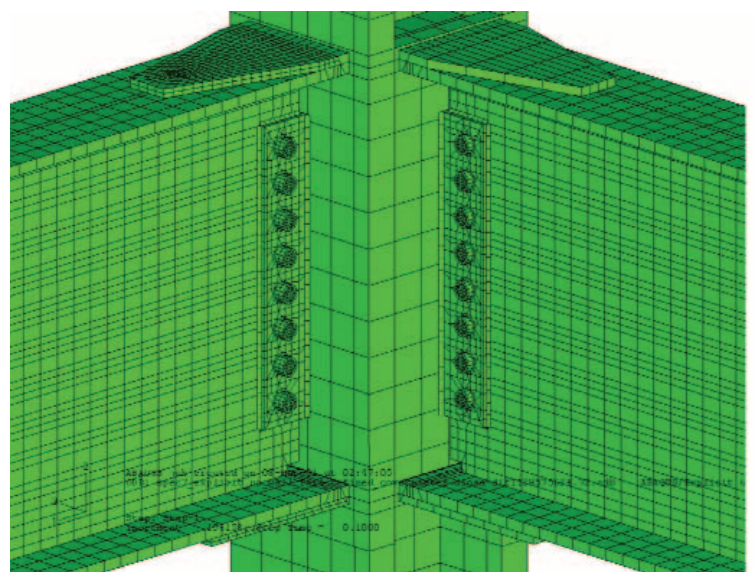
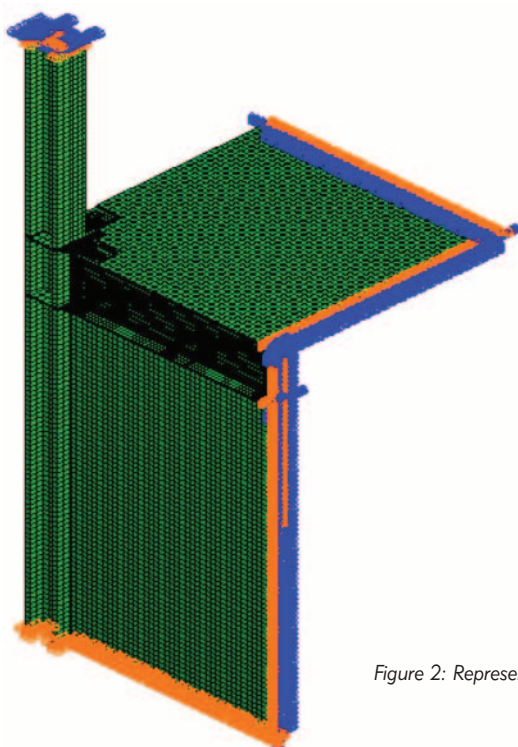


Figure 2: Representative Finite-element Model of Steel Connection

Finite-element results when blast pressures (Table 1) were applied to floor and sidewalls are summarized illustrated in Table 3. The predicted global rotations of the beams are close to the TM 5-1300 results for the frangible wall cases. However, the beams where the reflecting walls were located rotated much more than TM 5-1300 computation predicted, with the result that a greater impulse and energy are transferred to the beam and column in the room.

Sample maximum local rotations, associated with the plastic hinge that is formed in the beam, are shown in Figure 3. All local rotations for the different cases exceeded the limit of 2 degrees specified in TM 5-1300.

Note, also, that the beams twisted more severely horizontally, and clearly exceeded the TM 5-1300 limit criteria, since realistic internal blast pressures radiate outward in three dimensions. These findings indicate that

severe damage in the connections comes from the blast radiating in three dimensions as well as the vertically applied pressure. Deformation data for beams and column in the various cases indicate that dead loads and DIFs enhanced structural strength, but the beam cross sections twisted additionally due to dead loads. The column rotations indicate that the columns did not significantly affect the connection damage. According to the stress and strain results, components in all connections yielded for all the cases.

These analyses show the value of investigating structural connections using high-resolution finite-element analysis. For example, a steel moment connection judged safe based on TM 5-1300 criteria failed in the finite-element simulations. Moreover, TM 5-1300 criteria may need revision to reflect findings based on more complex behaviour.

Table 3: Maximum Displacements and Rotations of Beams (Case 2-2)

		Response Quantity	Beam 1				Beam 2			
			NO DL NO DIF	NO DL DIF	DL NO DIF	DL DIF	NO DL NO DIF	NO DL DIF	DL NO DIF	DL DIF
Vertical	Global	Displacement (in)	7.308	7.033	9.521	4.070	0.527	0.519	0.509	0.504
		Rotation (deg)	3.489	3.358	4.546	1.943	0.252	0.248	0.243	0.241
	Local	Displacement (in)	5.445	5.154	6.255	3.784	2.330	2.190	2.504	1.683
		Rotation (deg)	13.972	13.251	15.949	9.809	6.076	5.713	6.526	4.398
Horizontal	Global	Displacement (in)	6.178	6.245	7.160	2.679	10.397	10.539	10.900	8.692
		Rotation (deg)	2.950	2.982	3.419	1.279	4.964	5.032	5.204	4.150
	Local	Displacement (in)	4.058	3.731	4.360	2.847	6.201	5.456	6.519	4.225
		Rotation (deg)	10.504	9.675	11.266	7.412	15.818	13.998	16.588	10.926

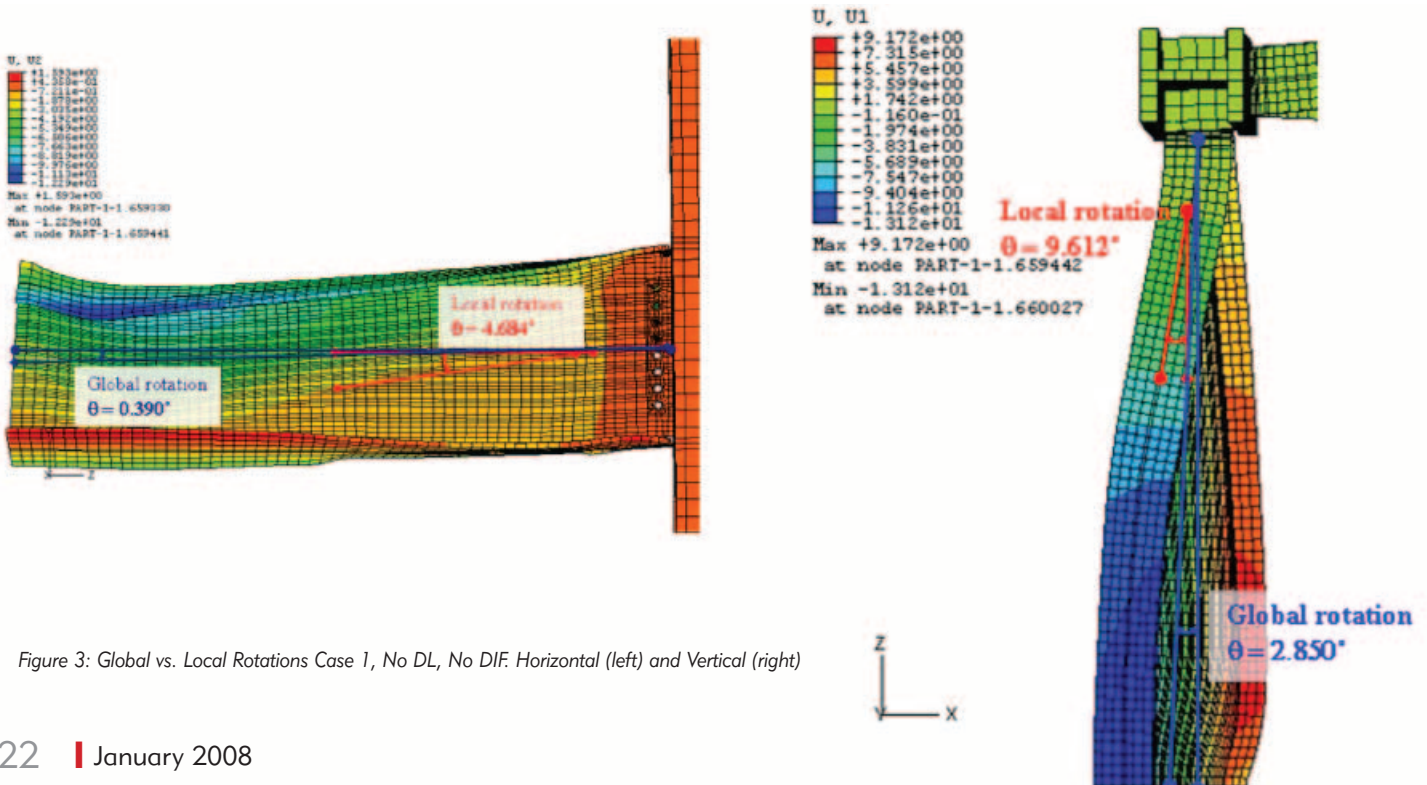


Figure 3: Global vs. Local Rotations Case 1, No DL, No DIF. Horizontal (left) and Vertical (right)

Progressive collapse of steel frame structures

Progressive collapse is a failure sequence in which local damage leads to large scale collapse in a structure. It has been an important issue in building design since the collapse of the Ronan Point apartment building in 1968 [11]. This type of intrinsically transient nonlinear phenomenon is difficult to model, understand, or design against without finite-element analysis.

Ten-story 3D moment frames with rigid and semi-rigid connections were studied for their sensitivity to failure of specific columns [3]. Three failure modes were considered: material, buckling, and connection failures. The first two have been studied extensively elsewhere [12, 13, and 14]. Experiments show that a real steel connection is neither rigid nor pinned [15]. In this study, the nonlinear moment-rotation relationship of the 10-story frame was obtained through extensive preliminary 3D finite-element simulation of steel connections.

Six initial failures with rigid and semi-rigid connections were used to analyze the frames for progressive collapse of five stories. Frame columns were based on a simple Load and Resistance Factor Design (LRFD) procedure manual [16]. Both ideal (rigid plus hinge) and semi-rigid connections were adopted for the progressive collapse analyses.

Analyses were performed up to seven seconds after the "initial failure", modeled by instantaneous removal of a designated column. The failure cases are shown in Figure 4. Only Case 6, where three columns were removed, caused total collapse of the building. Figure 5 shows the result for Case 6 of the building with ideal connections. Case 6 with semi-rigid connections also collapsed, but differently, as shown in Figure 6. The first failure was initiated at a connection, as shown in Figure 6-(b). As connections failed, the floors above the removed columns started to fall to the ground, and it caused columns buckling in the 6th floor, as shown in Figure 6-(c). These

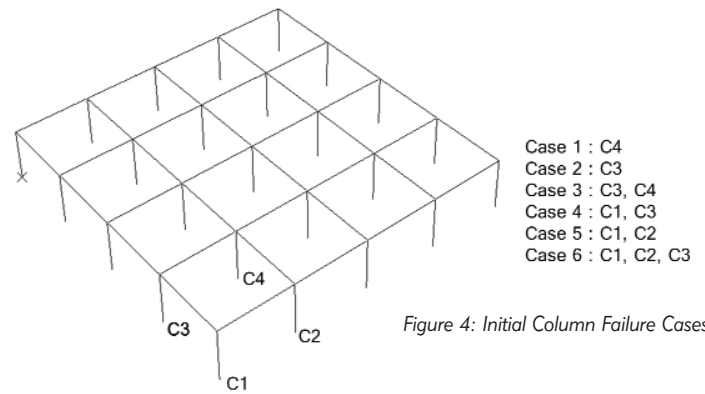


Figure 4: Initial Column Failure Cases

column buckling cases initiated horizontal failure propagation in the 6th floor, and the whole floor failed. After that, the columns in the first floor buckled because the floors collapsed, leading to the total collapse of the building.

The 10-story frame, designed for gravity and lateral loads, performed fairly well in the simulations. Even though the ideal and semi-rigid connection cases both caused total collapse for Case 6, they showed very different qualitative behaviour. The collapse of the semi-rigid connection case was caused by a cascade of local failures, such as connection failures and columns buckling. However, the collapse of the ideal connection case was caused by column buckling in the first floor. These different failure mechanisms are quite apparent in the nonlinear finite-element results.

The analyses also showed that once failure propagation initiated (i.e. horizontal column buckling), it would not stop until it caused total, or almost total, collapse. To protect a structure against progressive collapse, horizontal column buckling propagation appears to be the most critical factor to control.

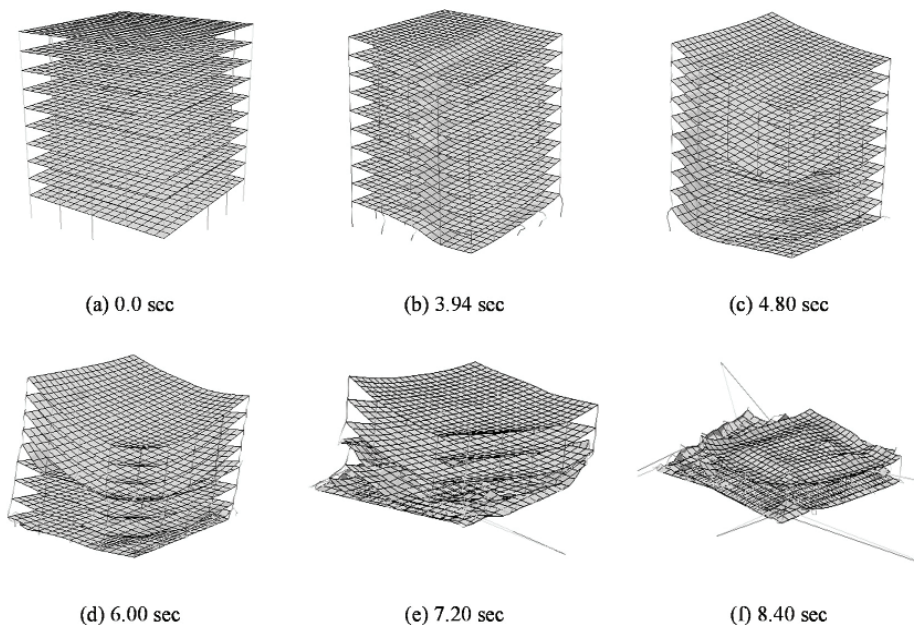


Figure 5: Case 6 with Ideal Connections

“ ...standard design criteria may not be conservative enough... ”

“To protect a structure against progressive collapse, horizontal column buckling propagation appears to be the most critical factor to control.”

Conclusions

FEA analyses reliably simulate critical aspects of structural behaviour, such as the details of steel connection designs and failure modes.

Our analyses suggest that connection behaviour under blast loading can vary significantly from standard design criteria. Importantly, the simulations also suggest that standard design criteria may not be conservative enough for the cases modeled here and may require refinement and revision in light of nonlinear transient effects, such as progressive collapse. Finite-element analysis of progressive collapse due to blast effects also reveals qualitative information about structural failure such as, in these cases, sensitivity of failure mode to connections.

Contact

Jeffrey Cipolla
 Simulia
jeffrey.cipolla@simulia.com

REFERENCES

- [1] Structures to Resist the Effects of Accidental Explosions TM 5-1300, Department of the Army (U.S.), 1990.
- [2] H. C YIM, C. STARR, T. KRAUTHAMMER, AND J. LIM. Assessment of Steel Moment Connections for Blast Loads, Proc. 2nd International Conference on Design and Analysis of Protective Structures 2006, Singapore, 13-15 November 2006.
- [3] T. KRAUTHAMMER, H.C. YIM, C. STARR, AND J.H. LIM. Progressive Collapse of Multi-Story Steel Frame Structures, Proc. 32nd DoD Explosive Safety Seminar, Philadelphia, PA, 22-24 August 2006.
- [4] ABAQUS Analysis User's Manual, Version 6.5, ABAQUS, Inc., ABAQUS, 2005.
- [5] Fundamentals of protective design for conventional weapons TM 5-855-1, Department of the Army (U.S.), 1992.
- [6] RIPLEY, R.C., DONAHUE, L., ZHANG, F. Modelling Complex Blast Loading in Streets, 6th Asia-Pacific Conference on Shock & Impact Loads on Structures, Perth, Australia, December 7 - 9, 2005.
- [7] J. CIPOLLA, Generalized incident wave loading on acoustic and solid elements, Proc. 77th Shock and Vibration Symposium, 2006.
- [8] ENGELHARDT, M.D., SABOL, T.A., ABOUTAHA R.S., AND FRANK K.H., Northridge Moment Connection Test Program Report for AISC, 1994.
- [9] NCEL, SHOCK User's Manual, Naval Civil Engineering Lab., Port Hueneme, CA, 1988.
- [10] WAGER, P., AND CONNETT, J., FRANG User's Manual, Naval Civil Engineering Lab., Port Hueneme, CA., 1989.
- [11] GRIFFITHS, H., PUGSLEY, A., SAUNDERS, O., Collapse of Flats at Ronan Point, Canning Town, Her Majesty's Stationery Office London, 1968.
- [12] ARISTIZABAL-OCHOA, J. D., Elastic Stability of Beam-Columns with Flexural Connections under Various Conservative End Axial Forces, Journal of Structural Engineering, Vol. 123, No. 9, pp. 1194-1200, September 1997.
- [13] ERMOPOULOS, J. CH., Buckling Length of Framed Compression Members with Semi-rigid Connections, Journal of Constructional Steel Research, Vol. 18, pp. 139-154, 1991.
- [14] LIEW, J. Y. R., CHEN, W. F., CHEN, H. Advanced Inelastic Analysis of Frame Structures, Journal of Constructional Steel Research 55, pp. 245-265, 2000.
- [15] KAMESHKI, E. S., SAKA, M. P., Genetic Algorithm Based Optimum Design of Nonlinear Planar Steel Frames with Various Semi-Rigid Connections, Journal of Constructional Steel Research 59, pp. 109-134, 2003.
- [16] AISC, Load and Resistance Factor Design – Structural Members, Specifications, & Codes, American Institute of Steel Construction, 1994.

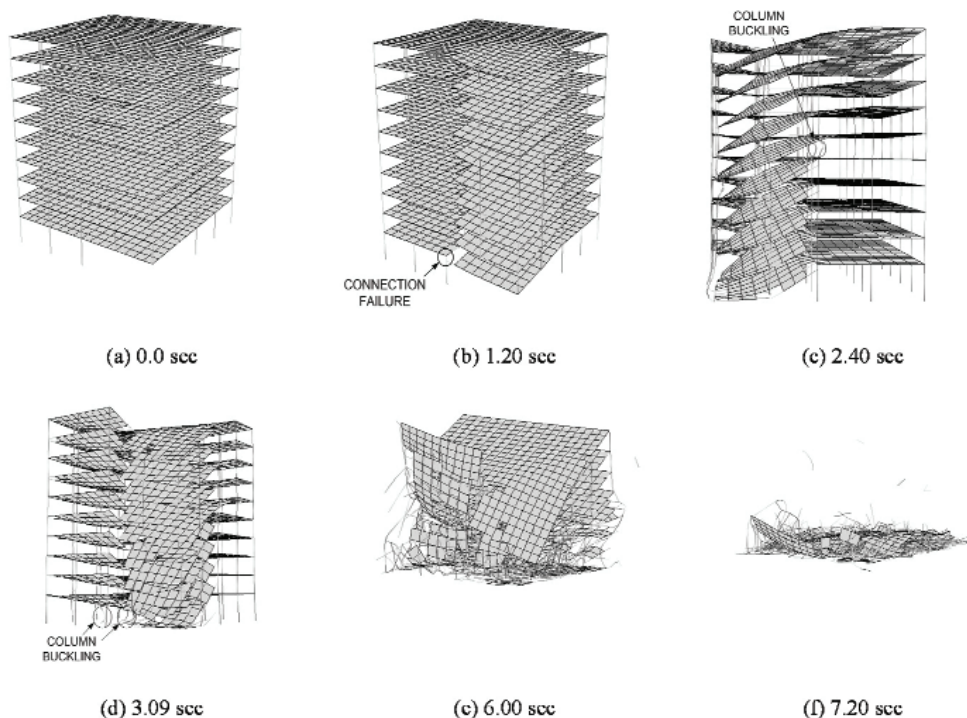


Figure 6: Case 6 with Semi-rigid Connections



“NAFEMS Membership is a must for all those truly involved with numerical analysis, for continuous improvement and learning and sharing of experience”

Instituto Tecnológico de Aragon

Creating Awareness | Delivering Education | Stimulating Standards



NAFEMS is the International Association for the Engineering Analysis Community, an independent, not-for-profit, international membership association, owned by its members. The scope of its activities encompasses all simulation technology, including Finite Element Analysis and Computational Fluid Dynamics. As new application areas and techniques constantly evolve, NAFEMS becomes involved to create awareness and deliver appropriate education and training.

NAFEMS publications and benchmarks are widely regarded within the engineering analysis community as the most authoritative source of information

available. The areas covered by NAFEMS are expanding year by year with the growth in membership, and people increasingly view NAFEMS as a one-stop shop for all aspects of information on engineering analysis.

For engineering analysts, NAFEMS offers an excellent platform for continuous professional development.

Get Involved.
Join NAFEMS Today.

Nasmyth Building • Scottish Enterprise Technology Park • East Kilbride G75 0QR • Scotland, UK

T +44 (0)13 55 22 56 88

F +44 (0)13 55 24 91 42

E info@nafems.org

W www.nafems.org