



**Groundbreaking
simulation solutions**

**FULFILL
YOUR
VISION**

Ground breaking technology

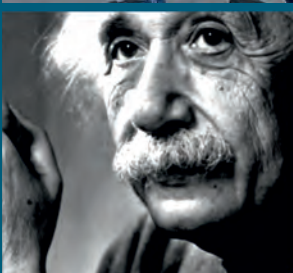
“BETA develops and delivers world class software that has forever changed engineering.”

Outstanding services

“I would like to express my gratitude to the support team for being very helpful and professional.”

High business ethics

“They never promise something they can't deliver.”





With our



Passion
for engineering



Drive
for excellence



Loyalty
to clients



**We pioneered the
Simulation & Analysis
market by introducing
automation decades
ago.**

**Today, as simulation
becomes imperative in
product design and
development, standing
by our founding values,
we are a world leader in
CAE and we continue to
amaze with our
innovative solutions.**





SIMULATION SOLUTIONS

BETA CAE Systems transformed CAE by introducing revolutionary automation software tools and practices into Simulation and Analysis processes almost 30 years ago.

Committed to our mission to enable engineers to deliver results of high value, we continue to offer state-of-the-art, high-performance software and best-in-class services. Our simulation solutions liberate low risk and high Return-On-Investment innovation.

The ground breaking technology, the excellent services and our high standards of business ethics are the three pillars on which BETA was founded and grows since then.

Our passion for engineering, our drive for excellence, and our loyalty to customers and partners, are the key ingredients of our success. We first established our reputation in the Automotive sector and now we are proud of the deployment of our software also in the Aerospace, Defense, Biomechanics, Electronics, Energy and other Industries. Our solutions exceed their requirements in all the simulation disciplines, and allow them to develop the right product, for the right market, at the right time.

A wide range of industries is now able to unleash the full benefits of simulation with our solutions, which are developed to cover industry specific challenges.

Our solutions enable innovation, and reinforce competitiveness and profitability.

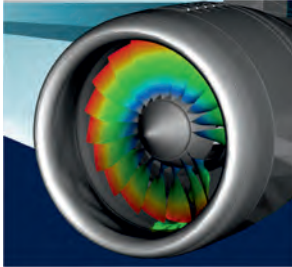


Aerospace

Defense

Automotive

Motorsports

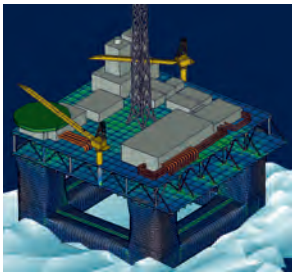


Trucks & busses

Maritime

Offshore

Rail vehicles

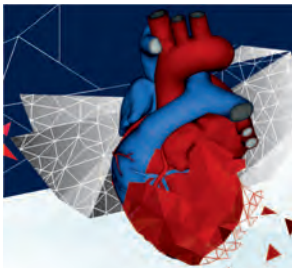


Heavy machinery

Biomechanics

Electronics

Industrial equipment



Robotics

Powertools

Energy

Construction



Bring your global teams together with the complete collaboration toolset and virtual environment of Neere.

Neere is specially designed and deployed for challenging engineering simulation projects, running around the world.



neere

**“Neere brings together
anyone, anywhere,
at any time”**

Neere is an innovative collaboration web platform that enables remote teamwork.

It boosts productivity by offering a complete toolset for desktop sharing and cooperation via web browser. Enjoy controlled access to file systems, messaging tools, voice, video calls, and an intuitive yet easy to learn VR environment. All the above provided in such a way that ensures security and trustworthiness.

**Master your data,
capture your
knowledge, streamline
your processes, and
co-ordinate your
cross-functional
resources.**

**Simulation, Process,
Data & Resources
Manager
enables you to
orchestrate the full
spectrum of your new
virtual product
development
procedures.**





**“Our CAE process is now
transparent, systematic, traceable and
repeatable”**

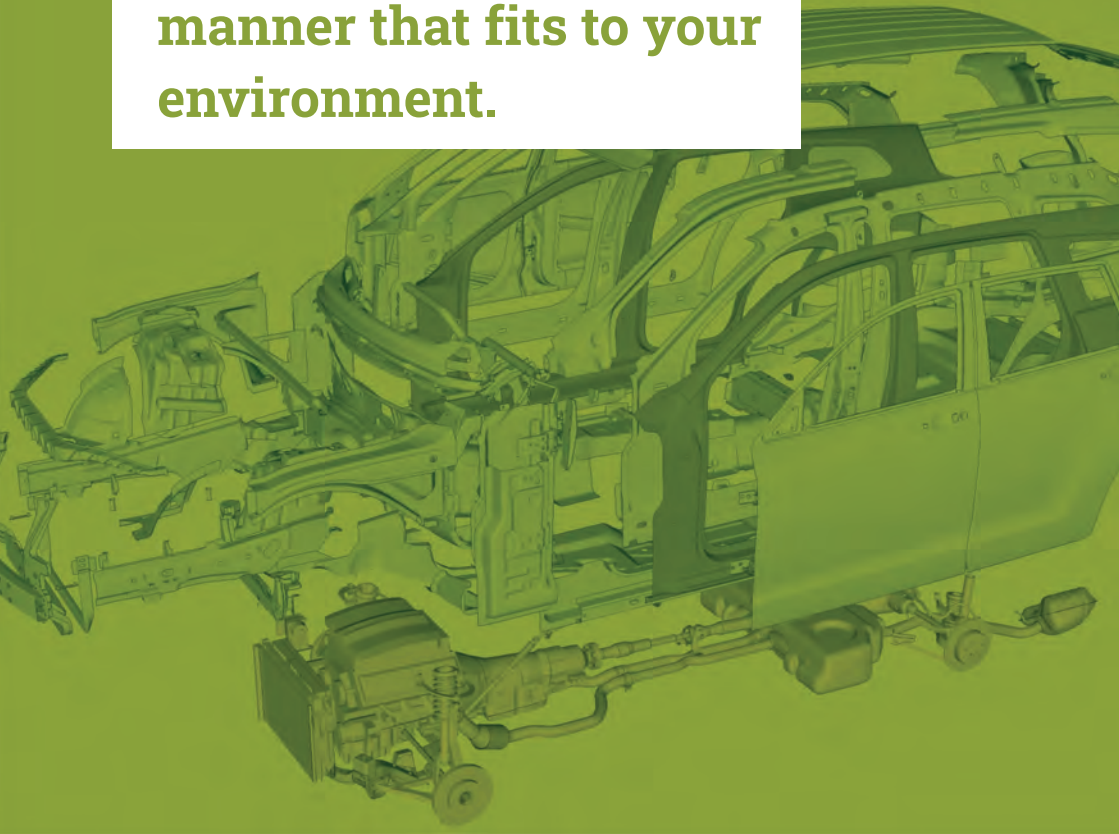
Addressing the problem of contemporary CAE community to integrate data, processes and resources, BETA brings forth a new solution for driving high quality and efficient virtual product development procedures.

SPDRM provides a simple and intuitive way to capture, deploy, manage and improve simulation workflows by integrating the resources, the tools and the data associated with these.

Reflecting a deep understanding of the demands of simulation and its role in the enterprise, it delivers CAE tasks and associated data to analysts, engineers, designers, suppliers, and managers.

Hold in hands the front end for data search, navigation and collaboration.

Interactively browse, visualize and handle all the CAE data, in a flexible and adaptable manner that fits to your environment.





“It’s really the point where data meet with their stakeholders in the context of simulation”

KOMVOS - SDM CONSOLE is an innovative Simulation Data Management platform for the interactive browsing, visualization and handling of all data related to CAE analysis, from PDM extractions to simulation runs, key results and reports. With user-friendly and intuitive interface, KOMVOS makes it possible to visualize the CAE models, get information about them and initiate data processing tasks.

Being flexible and adaptable, it can be integrated in all CAE environments since it performs equally well with all CAE data management systems. KOMVOS offers a scalable solution ranging from individual engineer to corporate level. This solution serves the function of a powerful front end for data search, navigation and collaboration.

**Choose like a
leading expert.**

**Take advantage of the
most complete solution
for full multivariant
model build up.**

**Quality, automation,
performance,
multidisciplinary nature
and abundance in
features and tools, in a
single environment.**





“ANSA has proved to be robust and efficient, and enabled us to reach our targets.”

ANSA is an advanced multidisciplinary CAE pre-processing tool that provides all the necessary functionality for full-model build up, from CAD data to ready-to-run solver input file, in a single integrated environment.

ANSA is the users' preference due to its wide range of features and tools that meet their needs. The list of productive and versatile features is long and the alternative tasks and processes to be completed using them are countless. The data management capabilities and the large number of supported solvers and disciplines enable unique multivariant and multidisciplinary modeling implementations.

Engage with the solver that sets new benchmark standards in performance, accuracy and robustness.

EPILYSIS covers solution types such as Structural, NVH, Optimization and more.

→

| | | | | | | |
|--------------------|--------------------|---------------------|---------------------|-----------------|-----------------|---|
| $\frac{4EI}{L}$ | $\frac{2EI}{L}$ | $\frac{6EI}{L^2}$ | $-\frac{6EI}{L^2}$ | 0 | 0 | 1 |
| $\frac{2EI}{L}$ | $\frac{4EI}{L}$ | $\frac{6EI}{L^2}$ | $-\frac{6EI}{L^2}$ | 0 | 0 | 2 |
| $\frac{6EI}{L^2}$ | $\frac{6EI}{L^2}$ | $\frac{12EI}{L^3}$ | $-\frac{12EI}{L^3}$ | 0 | 0 | 3 |
| $-\frac{6EI}{L^2}$ | $-\frac{6EI}{L^2}$ | $-\frac{12EI}{L^3}$ | $\frac{12EI}{L^3}$ | 0 | 0 | 4 |
| 0 | 0 | 0 | 0 | $\frac{AE}{L}$ | $-\frac{AE}{L}$ | 5 |
| 0 | 0 | 0 | 0 | $-\frac{AE}{L}$ | $\frac{AE}{L}$ | 6 |

EPILYSIS

SOLVER

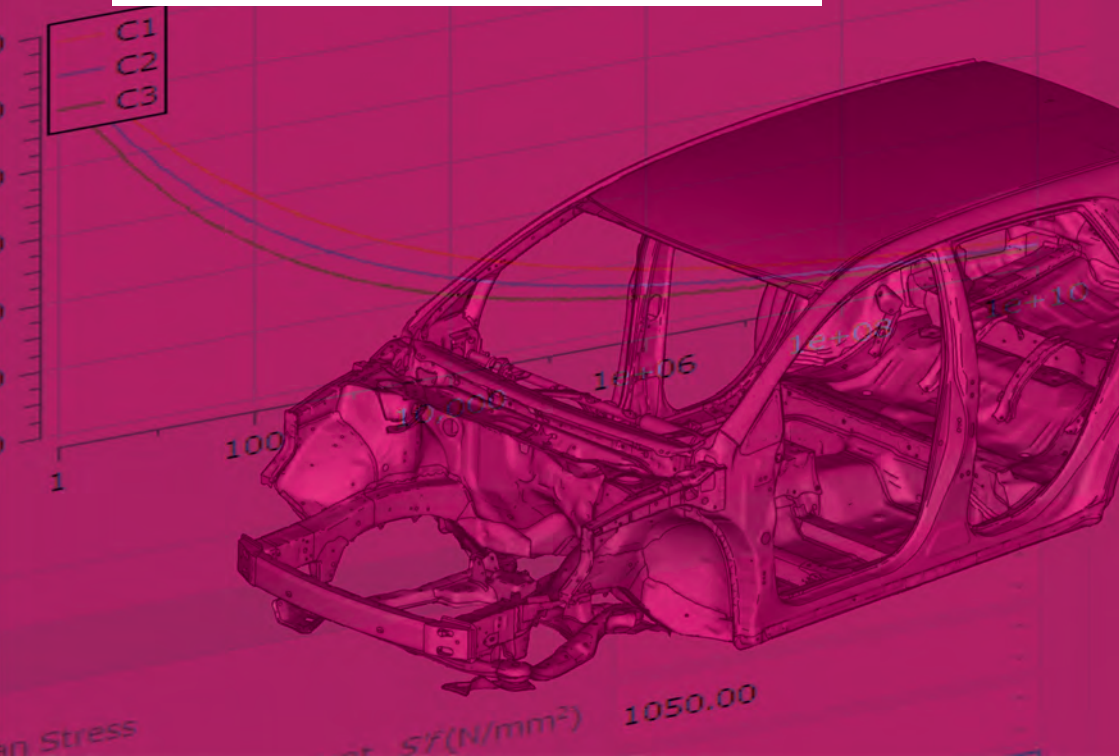
**“The most promising
and dynamically developed solver
for our contemporary needs”**

EPILYSIS serves as a contemporary solution in the field of Finite Element Analysis, embodying the accumulated knowledge from 30 years of collaboration with the CAE community.

It covers numerous solution types and intends to bridge the gap between pre- and post- processing for disciplines such as Structural, NVH, Optimization, and more.

**Grasp the future life of
your products**

**Set up your analysis in
a stepwise and detailed
manner, perform
multiple analyses and
tasks, and understand
the results of your
ideas.**





**“The comprehensive platform
for streamlined results
fatigue analyses”**

FATIQ is a standalone software, dedicated to fatigue life prediction. FATIQ offers an easy and streamlined path to setup, run, and results post-processing for fatigue analyses, that eliminates the bottlenecks with the use of other software. It is based on FE results and offers an intuitive solution for fatigue life prediction, both in frequency and time domain.

Benefit from the striking performance, the full automation capabilities and an easy-to-use toolbox.

Take advantage of the powerful platform for handling effectively even the most demanding post-processing tasks, including animations, plots, videos and reporting.





**“We succeeded in reducing significantly
the effort, time and cost required
for our procedures until reporting”**

META is a thriving multi-purpose post-processor meeting diverging needs from various CAE disciplines.

It owes its success to its impressive performance, innovative features and capabilities of interaction between animations, plots, videos, reports and other objects.

Its capability for high level of process automation established META as a standard accelerator of post-processing tasks, until report generation.

The single point-of-truth for simulation and physical test data.

ANSERS offers a direct way to retrieve, comprehend, correlate, and share simulation and physical test data.





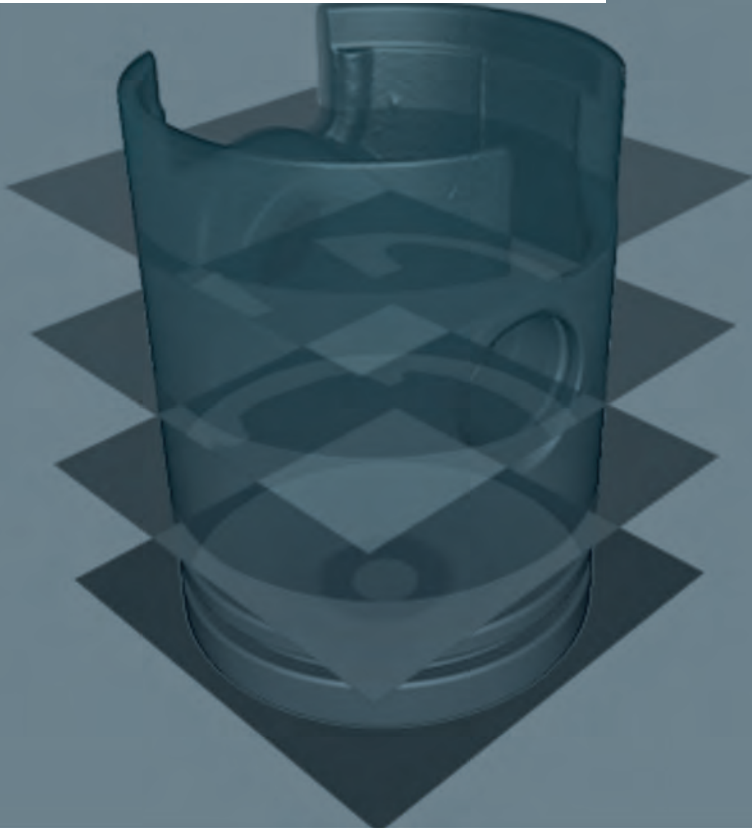
**“ANSERS will help you
get and share
the full perspective of your data”**

ANSERS is a web application, offering a front-end web dashboard interface for accessing and combining engineering simulation and physical test data, granting an overall perspective, to accelerate effectively the engineering design evolution decision making.

It comes to handle the vast amounts of data generated by simulation and physical tests that engineers have to work with. ANSERS offers an easy, yet thorough way, for accessing, visualizing, correlating, and sharing simulation and physical test data, through elaborative, customizable, and automatically updated dashlets, built to suite the purpose in the web dashboard environment. Data can be retrieved from a variety of servers, through simple filters, always respecting security restrictions.

**Turn the key to 3D-
modeling from CT-data
of physical objects.**

**Grasp image data and
turn them into
tessellated models,
ready to be driven to
further analysis.**





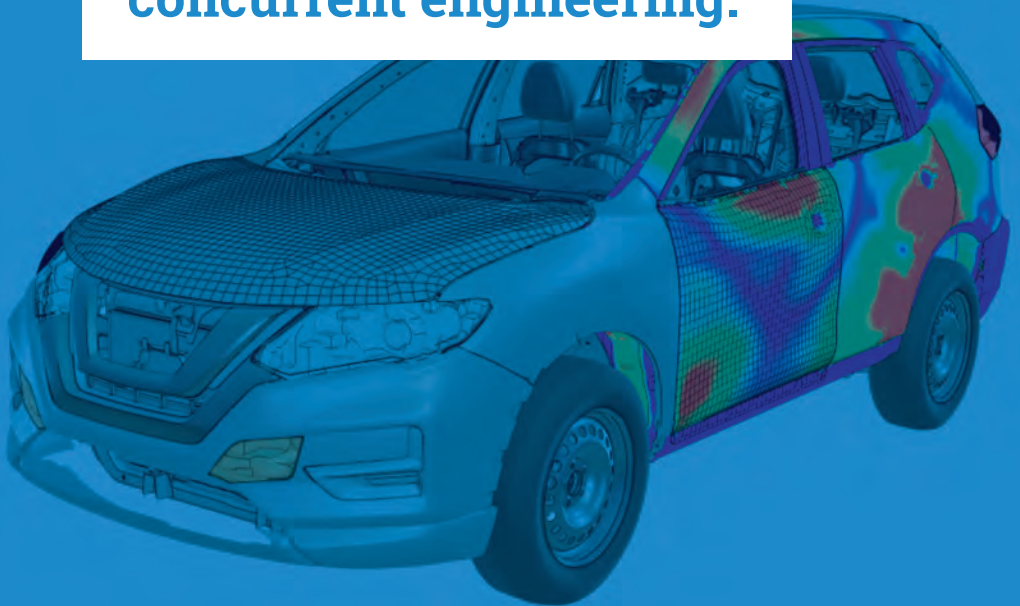
“Physical objects and simulation data have never been so accurately close”

Addressing the need of contemporary industry to embed new approaches, such as the integration of Computer Tomography (CT) data into the CAE process, we bring forth RETOMO. This new software couples simulation and physical objects even for high-end complex, multi-material structures.

RETOMO enables the correlation of CT with CAE and CAD data, by applying high-end methods to read, process, reduce, reconstruct and visualize CT images and output them as tessellated models.

Redefine product evolution cycles in Simulation Driven Design.

Accelerate digital product evolution cycles and employ the right tools for collaboration and concurrent engineering.





DESIGN + ENGINEERING

**“DEEN lays
a common ground
between Design and Simulation”**

DEEN is a desktop application, developed to be used by both CAD and Simulation engineers to review designs and simulation results directly on the 3D model. It can open databases from most well-known post processors holding model, simulation results, and any additional data.

DEEN offers all the necessary tools to facilitate the exchange of feedback between the CAD engineer and the analyst without hustling with complicated and puzzling interfaces. Mark areas on your models, add comments, create to-do lists, compare different design alternatives, and integrating the communication capabilities of NEERE, join with your colleagues your models' high rendering virtual reality world.

Add more software solutions.

Get more software solutions by BETA, on top of the legacy product line.



+ Machine Learning toolkit

The Machine Learning toolkit enables the capture and application of engineering knowledge by training and putting to use predictive models. Speed up simulation, allow for more design experiments, and take full advantage of Machine Learning in engineering simulation.

+ Smoothed Particle Hydrodynamics (SPH) solver

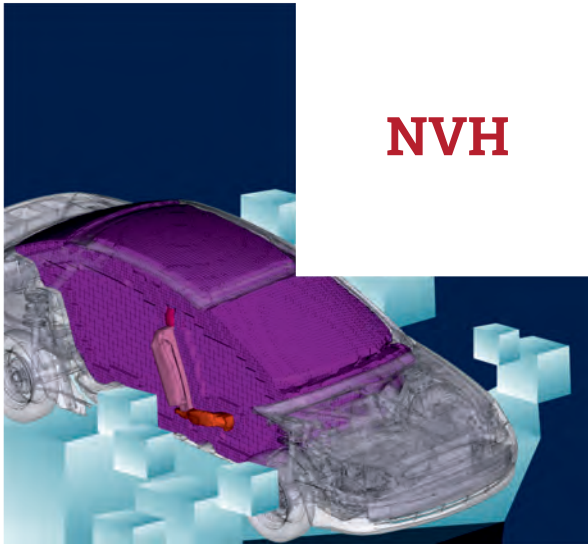
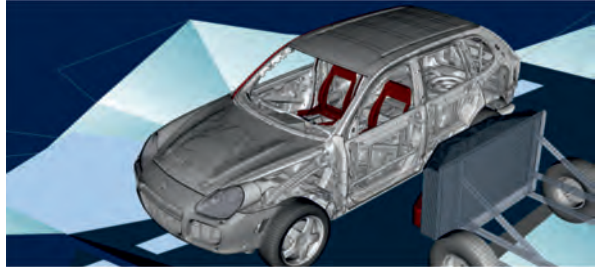
Based on a mesh-free Lagrangian method, the SPH solver addresses efficiently free surface liquid flows with minimal pre-processing requirements.

**Be empowered to
achieve your goals
for any analysis field,
in a timely and
effortless manner.**

**Build common models
and share them among
your disciplines.**



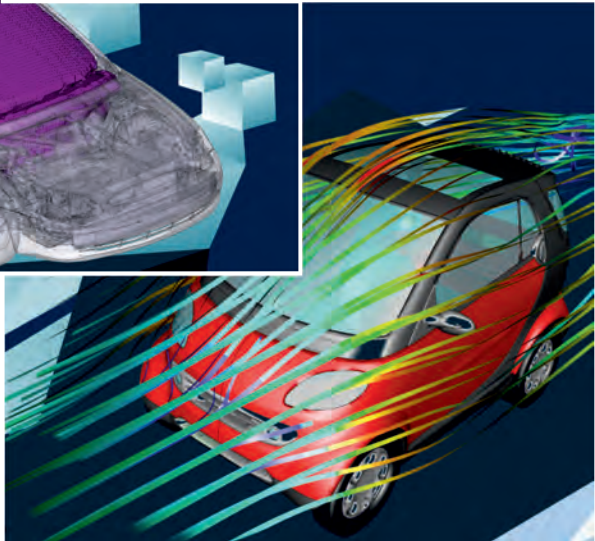
**Durability
& Fatigue**



NVH

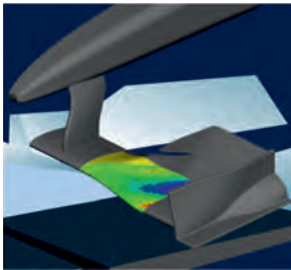
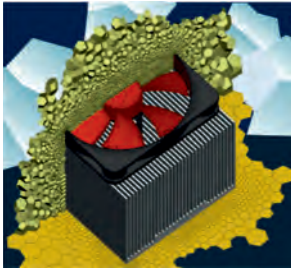
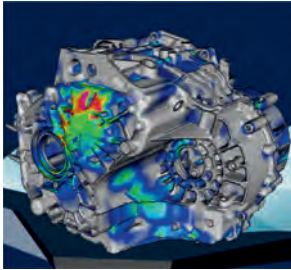
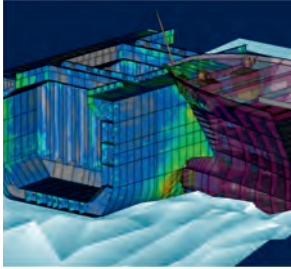
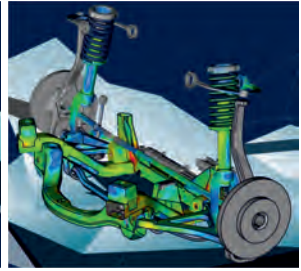
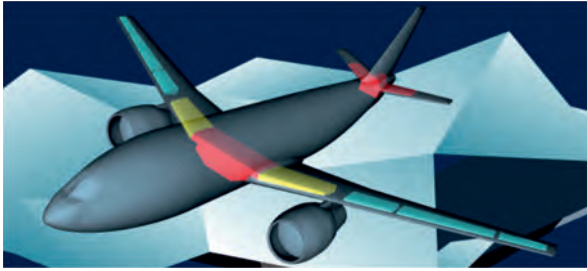
**Crash &
Safety**

**CFD &
Thermal**

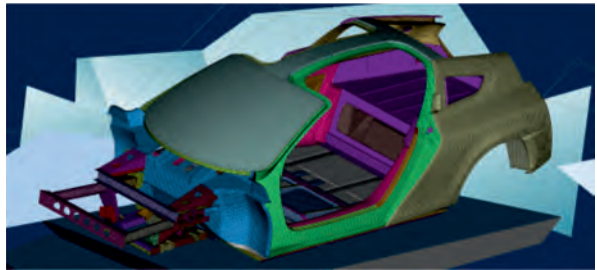


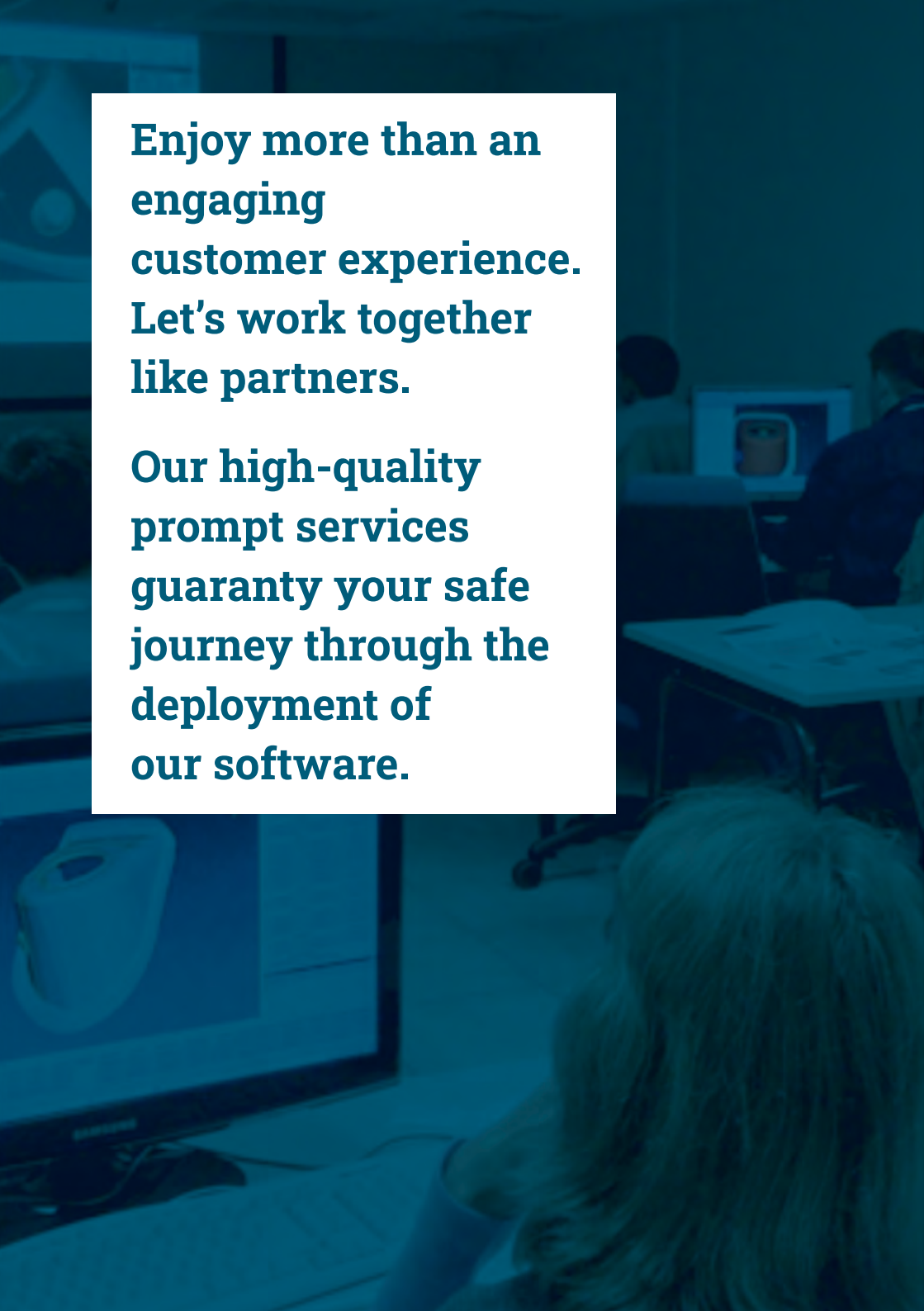
**Find the right path to
the resolution of your
simulation challenge.**

**You can skyrocket your
performance with tools
in hands, suitable to
your subject matter.**



Process automation
Data management
Multi-body dynamics
Powertrain
Fuel tank
Plastics
Laminated composites
Optimization

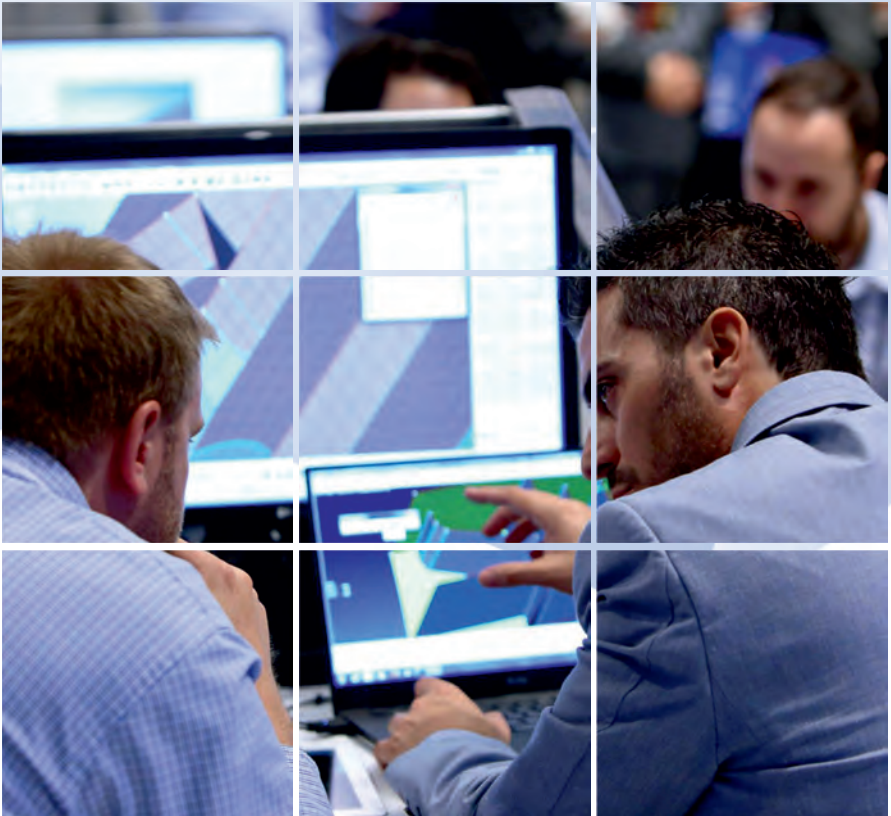




**Enjoy more than an
engaging
customer experience.
Let's work together
like partners.**

**Our high-quality
prompt services
guaranty your safe
journey through the
deployment of
our software.**

**“I am really grateful and impressed
by the speed and quality
of your customer service work”**



Rely on us, as an increasing number of innovative products creators do.

We always deliver by working with the same motivation, values and quality, and by enriching our team with more talented engineers.



BETA
SIMULATION SOLUTIONS

**The
beating
heart of
simulation**

